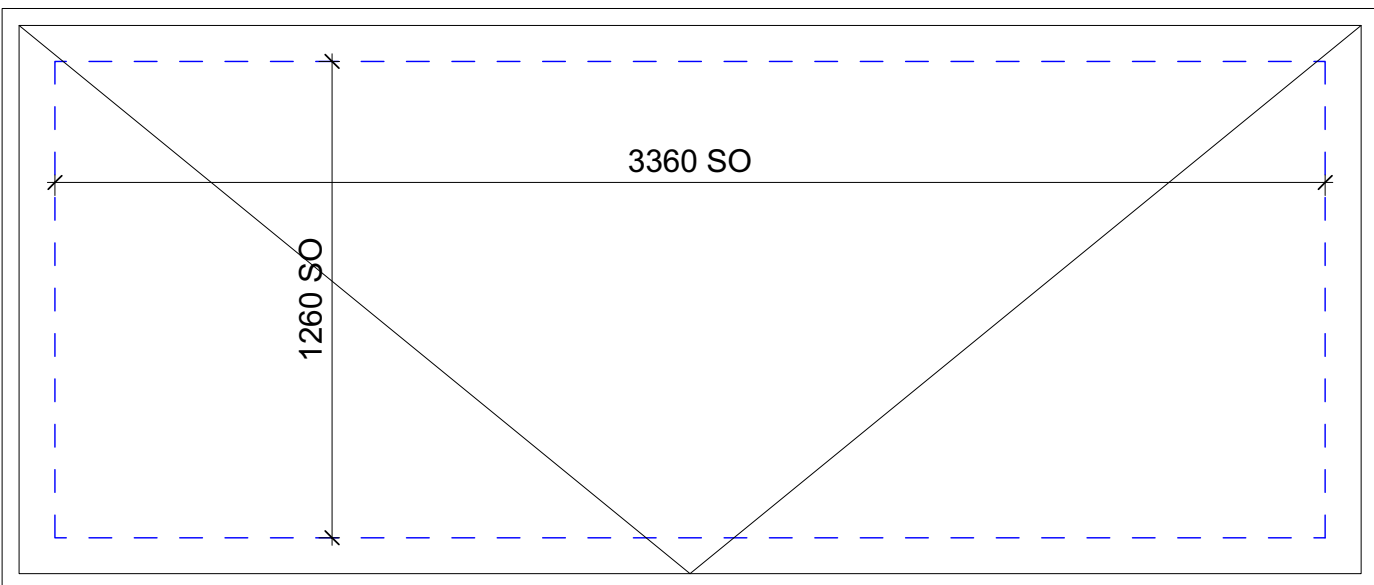
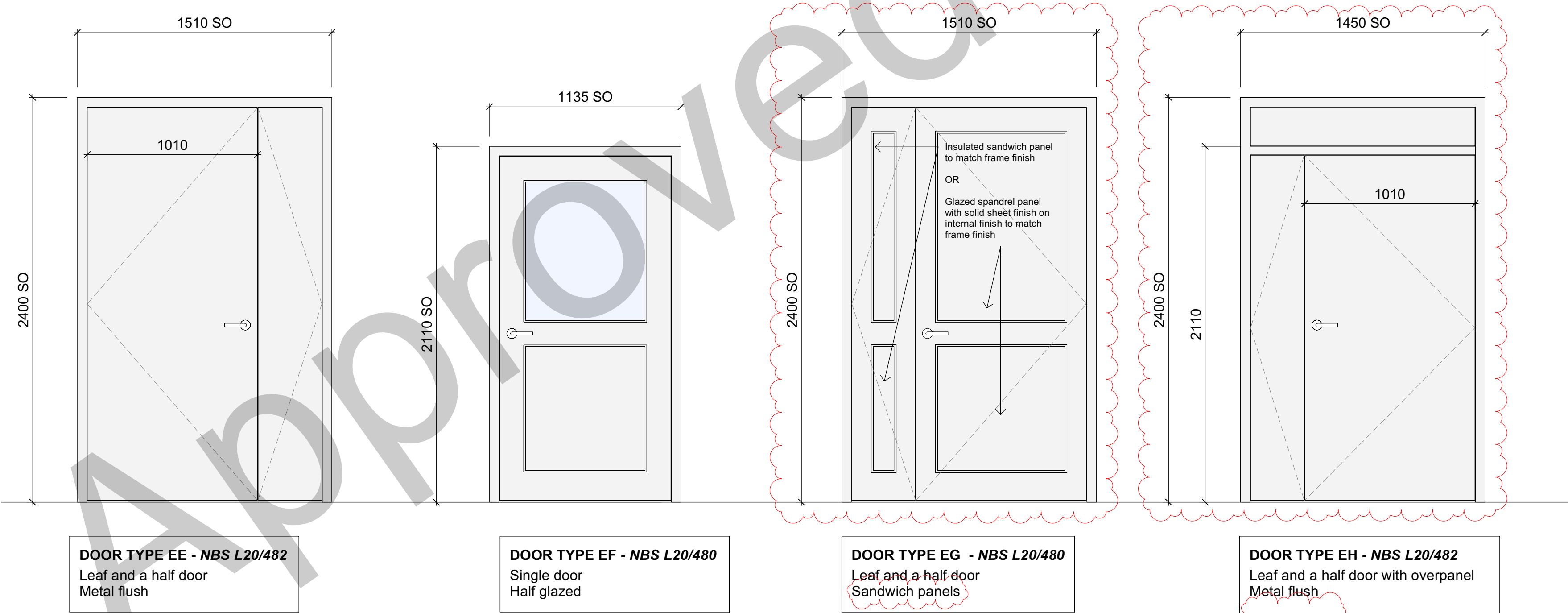
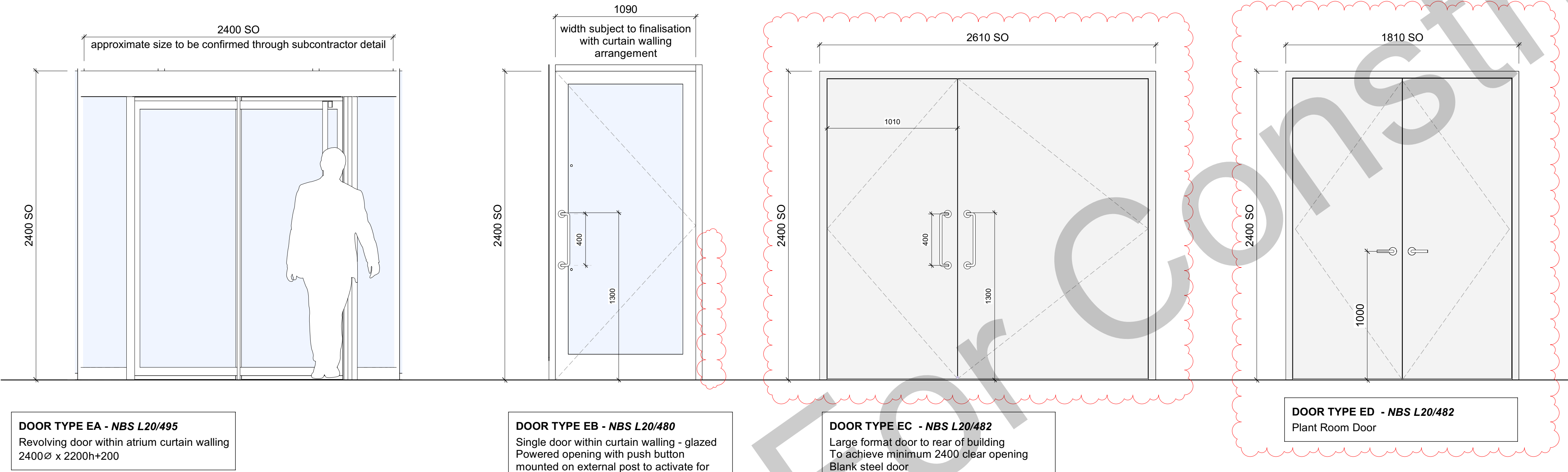


External Door Schedule													
Door Number	Room		Type	Door Overall Size (inc. tolerance)		Fire Rating (FD _ _ S)	Handing	Vision Panel	Door access control	Powered	Ironmongery Set	Finish (Refer to Key)	Comments
	Number	Name		Width (mm)	Height (mm)								
00_Ground													
ED001	R001	Reception / Atrium	EA	2400	2400	N/A	N/A		Yes	Yes	As manufacturer's standard	A	Revolving door - NBS L20/495
ED002	R001	Reception / Atrium	EB	1090	2400	N/A	LH	Yes	Yes	Yes	EIM03	A	Powered opening with push button to activate for DDA / access - NBS L20/480
ED003	R015	Circulation	EC	2610	2400	N/A	LH	No	Yes	No	EIM02	B	Large format door to rear of building; clear opening width to be 2400 minimum - NBS L20/482
ED004	R047	Plant	ED	1810	2400	N/A	Double Door	No	No	No	EIM04	B	Plant Room Door - NBS L20/482
ED005	R025	Stair 2	EE	1510	2400	N/A	RH	No	No	No	EIM05	B	Leaf and a half door; steel - NBS L20/482
ED006	R033	Circulation	EF	1135	2110	N/A	LH	Yes	No	No	EIM05	B	Single door, half glazed - NBS L20/480
ED007	R036	Lounge	EG	1510	2400	N/A	LH	Yes	No	No	EIM05	C	Leaf and a half door; glazed - NBS L20/480
ED008	R049	Stair 1	EH	1450	2400	N/A	LH	No	No	No	EIM05	B	Leaf and a half door; steel; with overpanel - NBS L20/482
03_Roof													
ED202	R212	Stair 2	EJ	1260	3360	N/A	Refer to layout	No	No	No	As manufacturer's standard	Manufacturer's standard	Roof hatch, linked to fire alarm - NBS L20/630

All dimensions are to be finalised to sub-contractor design, site checked by contractor noting any suitable requirement for tolerance / structural deflection.



EXTERNAL IRONMONGERY SETS

All ironmongery to be finalised and agreed with Client

EIM01 - Access control single
Omitted

EIM02 - Access control double
Push / pull handles to both leaves
Access control system
Electric strike locks with BGU override
Shoot bolts (with suitable extension to within operable height) to secondary leaf with push plate release
Overhead door closers to both leaves
Friction stays / restrictors to hold open / protect from wind damage
Door stop where relevant
Panic ironmongery to fire escape doors on main fire exits (discreet push pads not bars)

EIM03 - Powered door
Push / pull handles
Access control system
Powered opener / closer, to be fully coordinated with and linked to access control system
Battery back-up system to allow suitable escape route
Post card reader
Door stop where relevant
Back up deadlock / thumbturns

EIM04 - Plant room
Lever handles to main leaf
Shoot bolts to secondary leaf
Overhead door closers to both leaves with 'click open'
Friction stays / restrictors to hold open / protect from wind damage
Suited dead lock
Thumb turn internally
Door contacts (see note on cable routes)
Door stop where relevant

EIM05 - Escape doors
Discreet push pad with latch to main leaf
Shoot bolts to secondary leaf with push pad release
Suited deadlock externally
Overhead door closers to both leaves
Door stop where relevant

Access control system - To MEP engineers' detail

Generally strike locks, mag locks only to be used on data room, and where strike locks are not practicable.

External doors to be fitted with swipe access in both directions, with emergency break glass internally.
External doors to fail locked for security.

External doors to be fitted with swipe access externally, push button and break glass internally. Doors to fail open.

EXTERNAL DOOR FINISH KEY

A
INTERNAL: RAL 9005 Jet Black
EXTERNAL: RAL 9005 Jet Black

B
INTERNAL: **Special Metallic Light Silver (ordered at Voestalpine). Otherwise RAL 9006 White Aluminium.
EXTERNAL: **Special Metallic Light Silver (ordered at Voestalpine). Otherwise RAL 9006 White Aluminium.

C
INTERNAL: RAL 7047 Telegrey 4
EXTERNAL: **Special Metallic Light Silver (ordered at Voestalpine). Otherwise RAL 9006 White Aluminium.

****IN ABEYANCE** (Contractor to advise if exact match with QBISS panel coating is achievable to steel doors)

All levels of gloss finish TBC - subject to Client agreement

Contractors must check all dimensions on site. Only figured dimensions are to be worked from. Discrepancies must be reported before proceeding. This drawing is copyright. ©

GENERAL NOTE

All information is subject to sub-contractor co-ordination and further construction stage development.

Insulation build-ups to achieve target U values subject to final calculations by cladding / envelope sub-contractor.

All furniture/supplier equipment is shown indicatively and subject to client development.

M&E layouts subject to further coordination and development. All penetrations to be suitably stopped and sealed for fire proofing and acoustics.

Any fixings shown are indicative only and all subject to sub-contractor design.

NOTES:
NBS L20/480, NBS L20/482, NBS L20/495, NBS L20/630 for external doors generally

All door details/tolerances to be developed with Door Fabricator in full accordance with Manufacturer's recommendations.

Clear opening width of door to be advised by Door Supplier / Subcontractor prior to formation of openings on site.

Doors on accessible routes to achieve clear opening width requirements in accordance with AD Part M.

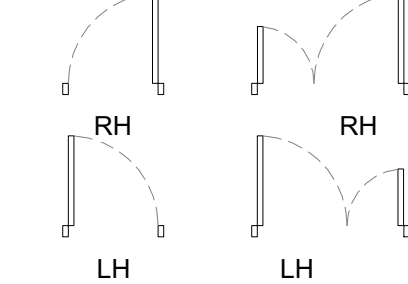
All glazing to be clear toughened safety glass and fire rated where required.
All doors with access control to have emergency escape break glass/ push button to exit on egress side - to be coordinated with electrical engineer requirements.

Refer to floor plans for door handing and NBS L20 for further details.

All acoustic rating subject to further verification with an acoustician.

All cable routes to door contacts to be discreet, colour matched to frame, and with minimum visible cabling

DOOR HANDING:



IRONMONGERY NOTES:

Please note: General requirements identified, details TBC and full item scheduled by ironmongery supplier. All ironmongery to be finalised and agreed with Client.

All ironmongery to be in stainless steel with an anti-bacterial coating subject to confirmation.

Ironmongery to meet visual and LRV contrast requirements by 15 points.

Butt hinges to all doors to be s/s severe duty and fire rated.

Minimum 3no. hinges per leaf, or as recommended by Door Manufacturer.
Ironmongery to NBS P21/121 generally and to industry recognised standard such as Guild of Architectural Ironmongers.

C01	04.04.25	Issued for Construction	MM	JF
P03	26.02.25	Issued for review and comment	MM	JF
T10	03.10.24	Tender Issue	MM	JF
P02	13.09.24	DRAFT Tender Issue	MM	JF
T02	23.02.24	Tender addendum	RM	JF
T01	09.02.24	Tender Issue	MM/RM	JF
P01	13.10.23	Issued for Stage-3	MM/RM	JF

Issue | Date | Revision notes | Dm | Chk'd

DKA

DKA The Mall House 17-20 Sydney Buildings Bath BA2 6B2
T 01225 465701 E info@dka.co.uk W www.dka.co.uk

Client

Mercedes-Benz Grand Prix Ltd.

Project DKA Project No. | 295853

Gateway Building

Drawing Title

External Door Schedule

Project | Originator | Volume | Level | Type | Role | Number

295853 - DKA - XX - XX - SH - A - 5210

Description Status | Revision

Construction A5 - C01

Scale

1:20@A1

1:40@A3

0 1m