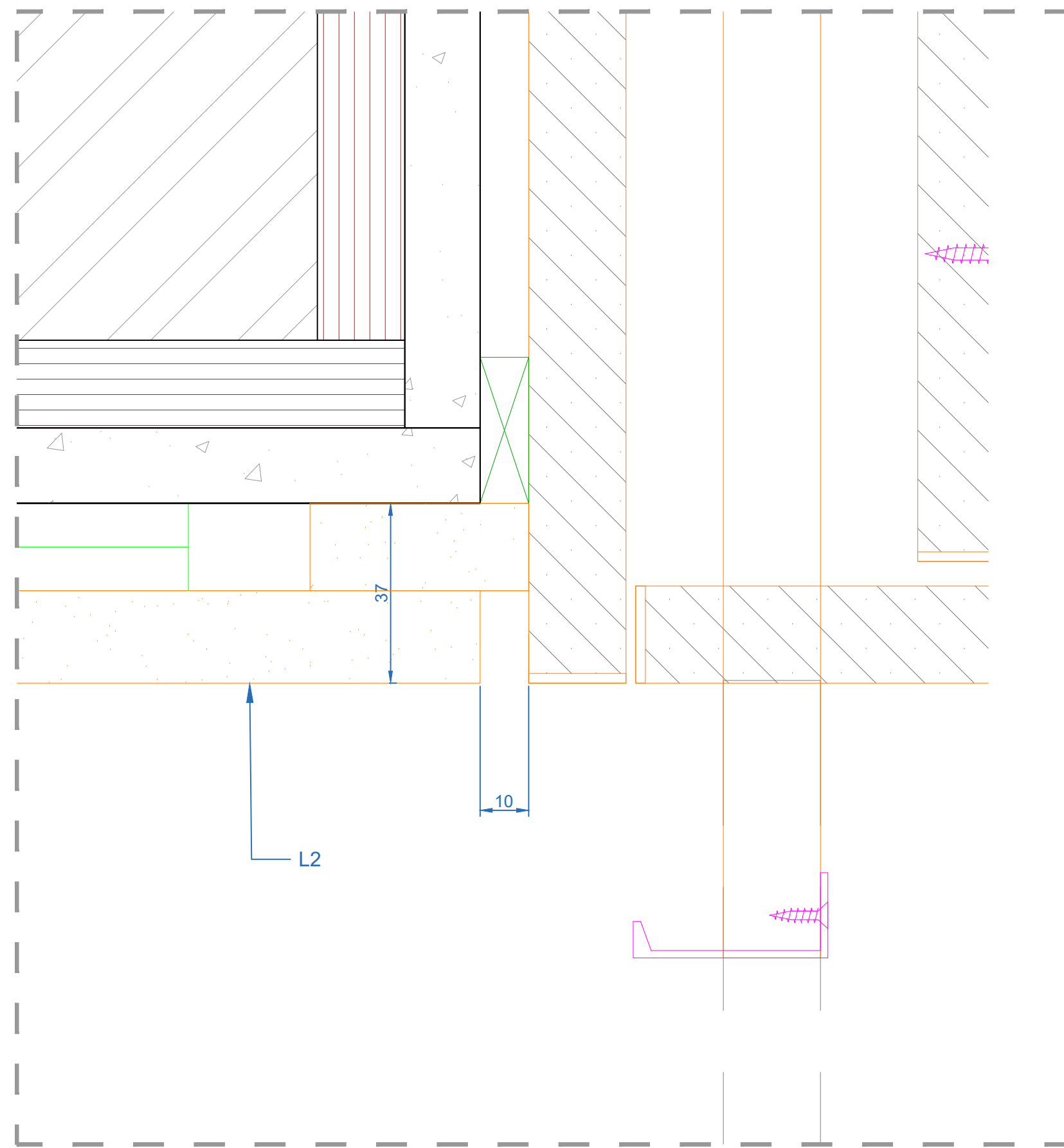
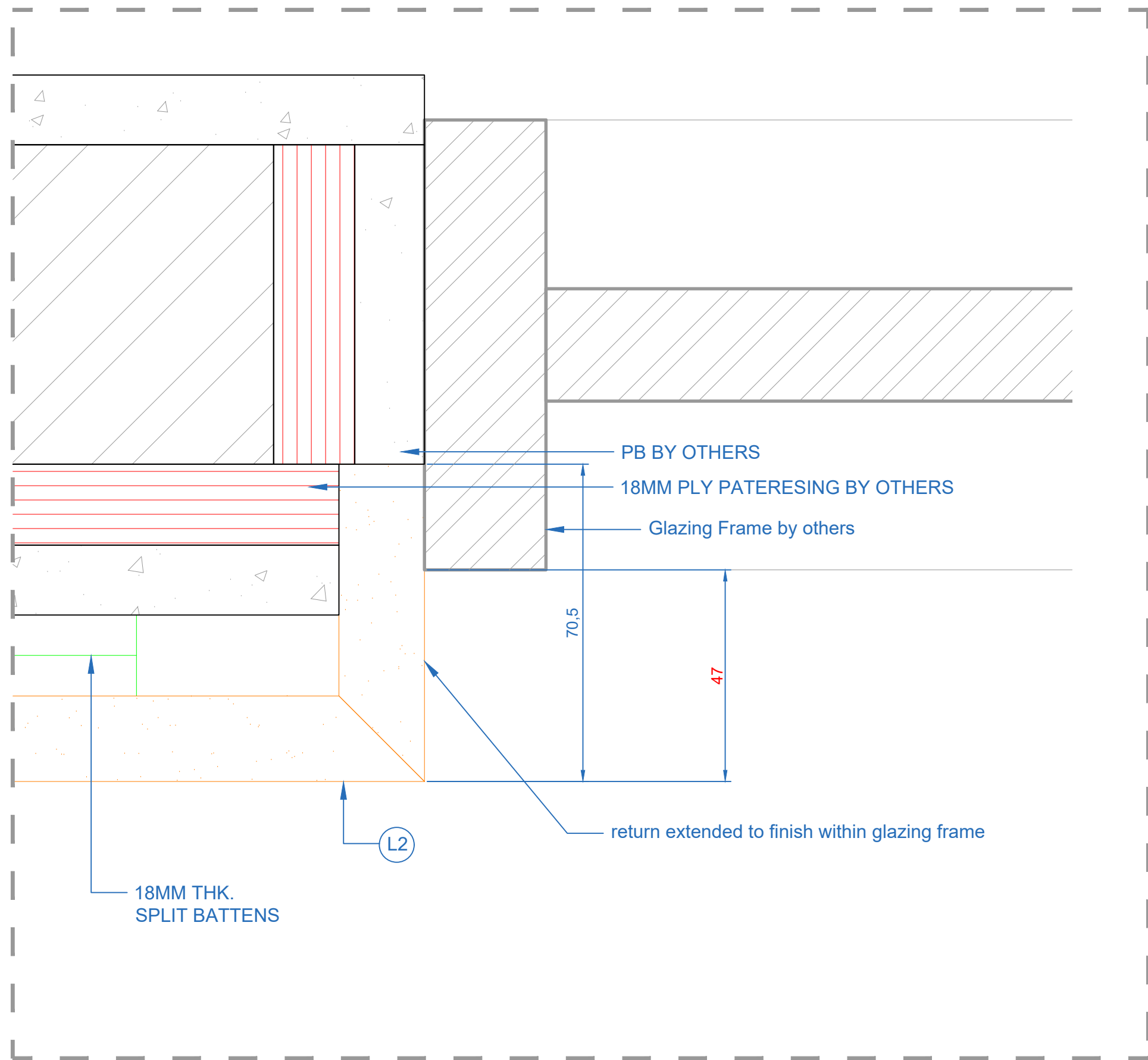


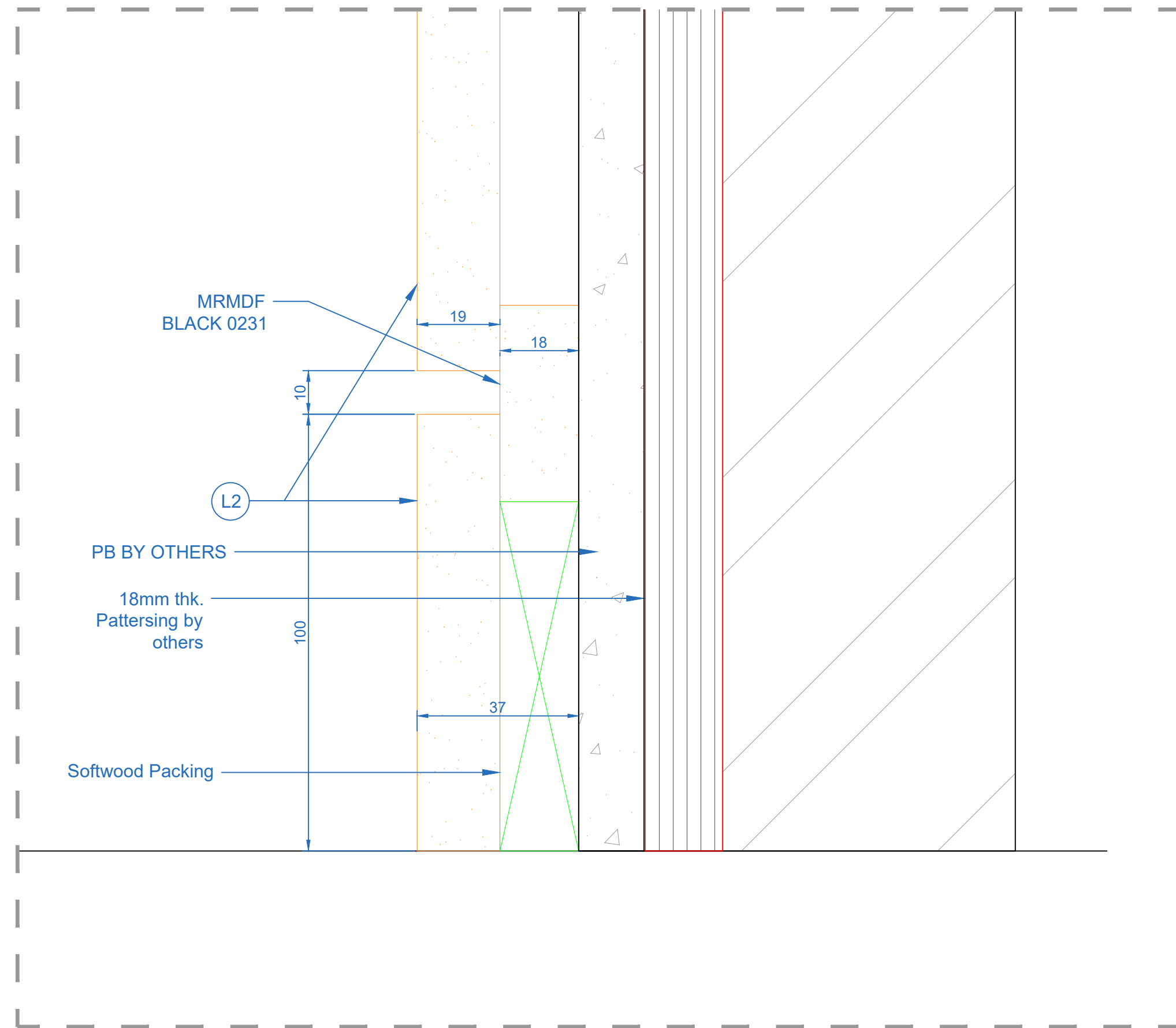
04 Detail
Scale 1:1



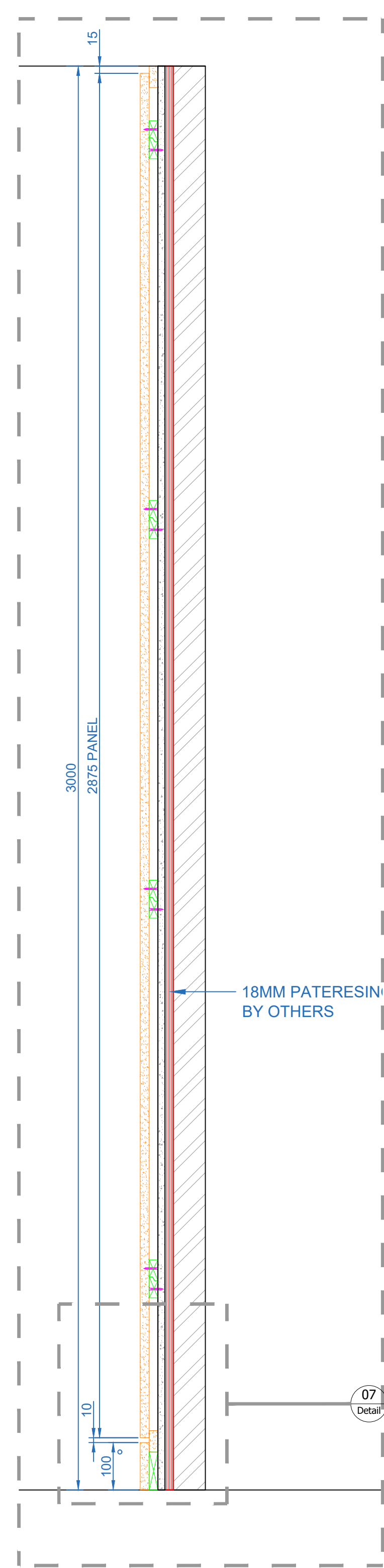
05 Detail
Scale 1:1



06 Detail
Scale 1:1



07 Detail
Scale 1:1



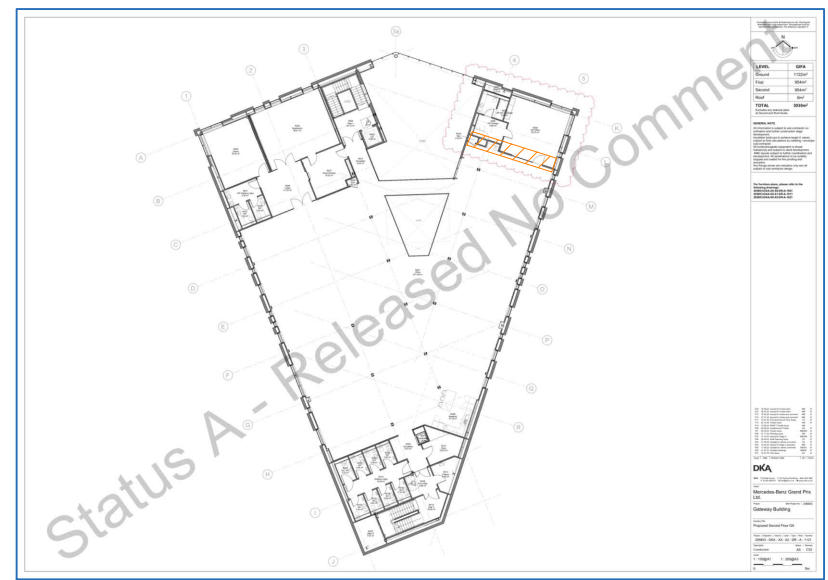
03 Section
Scale 1:8

NOTES:

- Adapted to site condition & sizes before commencing manufacture.
- All site sizes should be agreed or checked by others before manufacture.
- All finish to approved samples.

LEGEND:

| | |
|----|---|
| L2 | Fenix 18mm thk. Nero Ingo (0720) - WF30 |
|----|---|



KEY PLAN : SECOND FLOOR

AGREED TO FOLLOW
LATEST SETTINGOUT
PLANS - REV C08

| | | |
|-----|-------------------------|------------|
| C01 | Issued for Construction | 11.12.2025 |
| P01 | Initial Issue | 18.11.2025 |
| Rev | Details | Date |

Contractors must verify all dimensions on site before any works are commenced.
This drawing remains the property of WJL Contracts and may not be reproduced in any way without prior consent.

Job Title
GATEWAY BUILDING

Drawing
Wall Paneling around Tea Point Details (sht 02 of 02)

| | | | |
|----------|----|------|------------|
| Drawn By | GM | Date | 18.11.2025 |
|----------|----|------|------------|

| | | | |
|---------|--------|------|-----|
| Job No. | 561.35 | Rev. | C01 |
|---------|--------|------|-----|

| | | | |
|---------|----------------------------|-----------|------------|
| Dwg No. | 295853-WJL-XX-02-DR-O-0017 | Rev. Date | 11.12.2025 |
|---------|----------------------------|-----------|------------|

Client Dwg Ref.
295853 - DKA - XX - 02 - DR - A - 1621

Scales
Noted @ A1

Suitability
Issued for Construction



ALL DRAWINGS 3rd ANGLE PROJECTION UNLESS OTHERWISE STATED