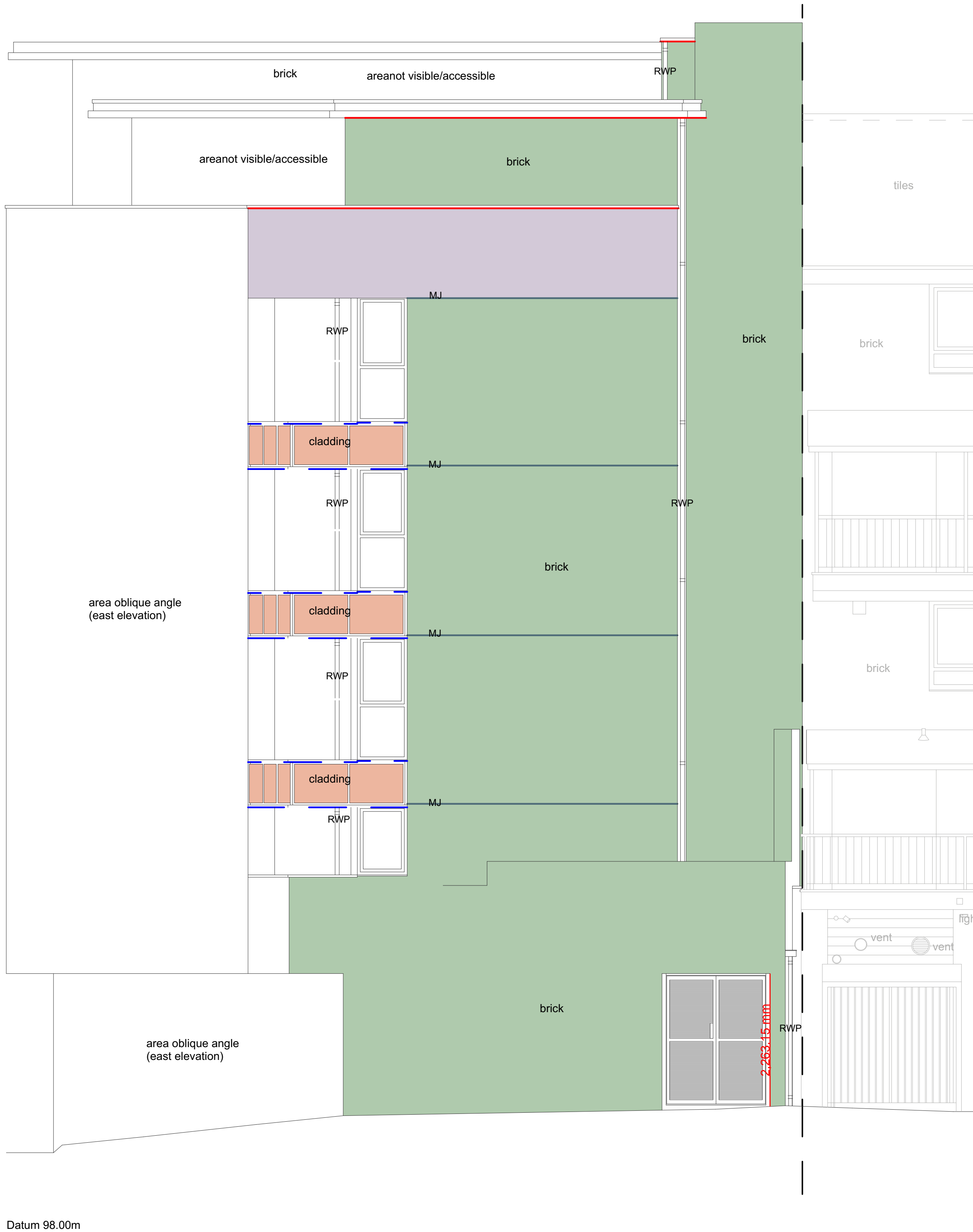
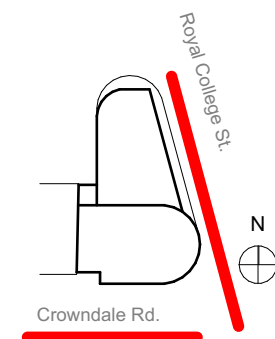


PLEASE NOTE:
THESE ARE **NOT** AS BUILT DRAWINGS. ALL
DISCREPANCIES ARE DUE TO "AS BUILT" INFORMATION
AVAILABLE - NEEDS FURTHER CONFIRMATION



NORTH ELEVATION



- KEY
- Cavity Barrier 60min Integrity/30min Insulation (tbc Marshalls)
 - Cavity Barrier 60min Integrity/30min Insulation OSCB (open state cavity barrier)
 - Cavity Barrier around Windows and Doors 30min Integrity/15min Insulation
 - Cavity Barrier around Windows and Openings 30min Integrity/15min Insulation OSCB (open state cavity barrier)
 - Movement Joints
 - WT 01 - Aluminium Rainscreen Cladding Panels
 - WT 02 - Brickwork Wall with fire rated full-fill insulation
 - WT 03 - Rendered Wall
 - WT 04 - Balconies
 - WT 05 - Metal Panels - Projecting Balconies (backing substrate unknown)
 - WT 06 - Brickwork Wall with fire rated full-fill insulation to Parapet Wall

Note 1 - Brickwork
To ensure coordination with existing windows, balconies, and edges, brickwork setting out in both the vertical and horizontal directions should match existing. We would, therefore, request that the brickwork subcontractor record the setting out before demolition occurs.

Note 2 - Services Penetrations
Services penetrations are to be protected and maintained operational and free from blockage during construction

Note 3 - Rainwater Hoppers and Downpipes
Rainwater hoppers and downpipes are to be retained and replaced. It is acknowledged that they will need to be altered at times to facilitate the remedial works, but they should be maintained operational at all times.

01	FOR TENDER	RS	ML	20/11/2024
Revision	Description	Drawn	Checked	Date
CREATE				
DESIGN + ARCHITECTURE				
Wigglesworth House 69 Southwark Bridge Road London SE1 9HH				
+44 207 021 0267 info@createdesign.org www.createdesign.org				

CROWNDALE HOUSE
NW1 1TT
Client
Fairway Property Investments Ltd.

RE-CLADDING OF RESIDENTIAL BUILDING
ELEVATION MARKUPS
NORTH ELEVATION

CDA Ref	Scale(s)	Original Paper Size
704	1:1, 1:50	A1

Drawing Number							
Project	Originator	Volume	Level	Type	Role	Class	Number
704	CDA	XX	ZZ	DR	A	21	0203
Revision							
Revision	Description						
01	FOR TENDER						

This document and its design content is copyright ©. It shall be read in conjunction with all other associated project information including models, specifications, schedules and related consultants documents. Do not scale from documents. All dimensions to be checked on site. Immediately report any discrepancies, errors or omissions on this document to the Originator. If in doubt ASK.