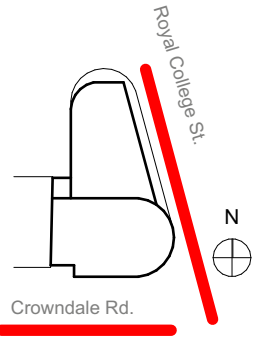


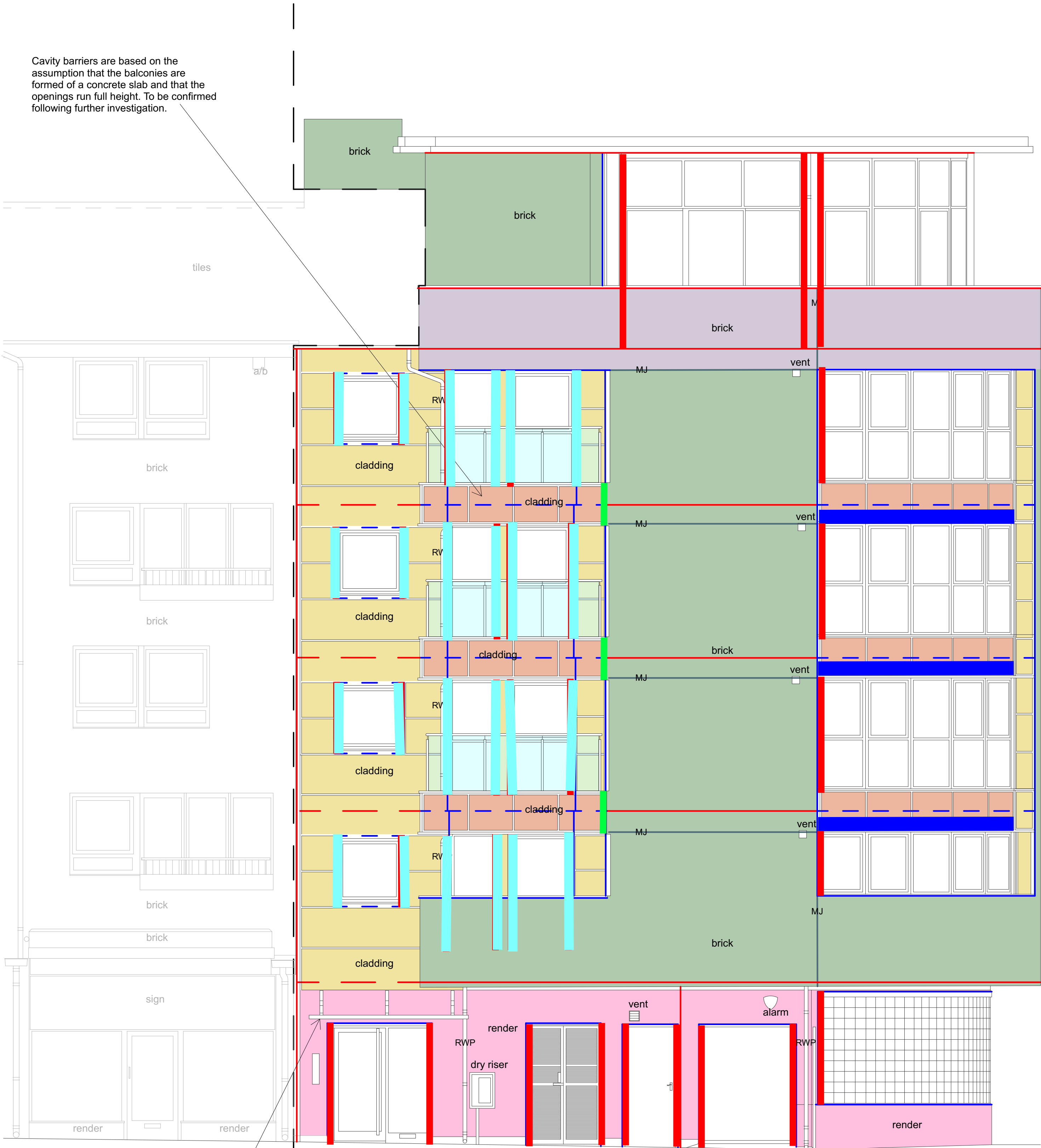
PLEASE NOTE:
THESE ARE **NOT** AS BUILT DRAWINGS. ALL
DISCREPANCIES ARE DUE TO "AS BUILT" INFORMATION
AVAILABLE - NEEDS FURTHER CONFIRMATION



KEY

- Close off balconies
- Firestopping steel to ceiling
- Firestopping lintels
- Firestopping between cladding & brickwork
- Firestopping 600mm void
- Close off battens at window edges
- Timber board removed and replaced with A2 alternative

Cavity barriers are based on the assumption that the balconies are formed of a concrete slab and that the openings run full height. To be confirmed following further investigation.



Datum 98.00m

SOUTH ELEVATION

KEY

- Cavity Barrier 30min Integrity/15min Insulation
- Cavity Barrier 30min Integrity/15min Insulation OSCB (open state cavity barrier)
- Cavity Barrier around Windows and Doors 30min Integrity/15min Insulation
- Cavity Barrier around Windows and Openings 30min Integrity/15min Insulation OSCB (open state cavity barrier)
- Movement Joints
- WT 01 - Aluminium Rainscreen Cladding Panels
- WT 02 - Brickwork Wall with non-combustible partial-fill insulation
- WT 03 - Rendered Wall
- WT 04 - Balconies
- WT 05 - Metal Panels - Projecting Balconies (backing substrate unknown)
- WT 06 - Brickwork Wall with fire rated full-fill insulation to Parapet Wall

Note 1 - Brickwork
To ensure coordination with existing windows, balconies, and edges, brickwork setting out in both the vertical and horizontal directions should match existing. We would, therefore, request that the brickwork subcontractor record the setting out before demolition occurs.

Note 2 - Services Penetrations
Services penetrations are to be protected and maintained operational and free from blockage during construction

Note 3 - Rainwater Hoppers and Downpipes
Rainwater hoppers and downpipes are to be retained and replaced. It is acknowledged that they will need to be altered at times to facilitate the remedial works, but they should be maintained operational at all times.

06	FOR TENDER	RS	ML	06/01/2025
05	FOR TENDER	RS	ML	23/12/2024
04	FOR TENDER	RS	ML	20/11/2024
03	REVISED DRAFT	MD	NC	19/02/2024
02	REVISED DRAFT	MD	NC	06/11/2023
01	FOR REVIEW	MD	NC	12/10/2023

Revision	Description	Drawn	Checked	Date
----------	-------------	-------	---------	------

CREATE
DESIGN + ARCHITECTURE

Wigglesworth House 69 Southwark Bridge Road London SE1 9HH
+44 207 021 0267 info@createdesign.org www.createdesign.org

CROWDALE HOUSE
NW1 1TT

Client
Fairway Property Investments Ltd.

RE-CLADDING OF RESIDENTIAL BUILDING
ELEVATION MARKUPS
SOUTH ELEVATION

CDA Ref 704 Scale(s) 1:50, 1:1 Original Paper Size A1

Drawing Number
Project Originator Volume Level Type Role Class Number
704 CDA XX 05 DR A 21 0200

Revision 06 FOR TENDER

This document and its design content is copyright ©. It shall be read in conjunction with all other associated project information including models, specifications, schedules and related consultants documents. Do not scale from documents. All dimensions to be checked on site. Immediately report any discrepancies, errors or omissions on this document to the Originator. If in doubt ASK.

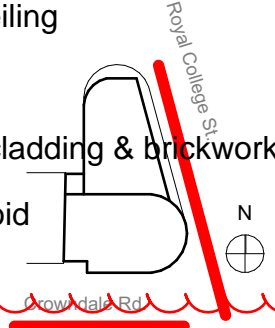
KEY

- Close off balconies
- Firestopping steel to ceiling
- Firestopping lintels
- Firestopping between cladding & brickwork
- Firestopping 600mm void
- Close off battens at window edges
- Timber board removed and replaced with A2 alternative

PLEASE NOTE:
THESE ARE NOT AS BUILT DRAWINGS. ALL
DISCREPANCIES ARE DUE TO "AS BUILT" INFORMATION
AVAILABLE - NEEDS FURTHER CONFIRMATION

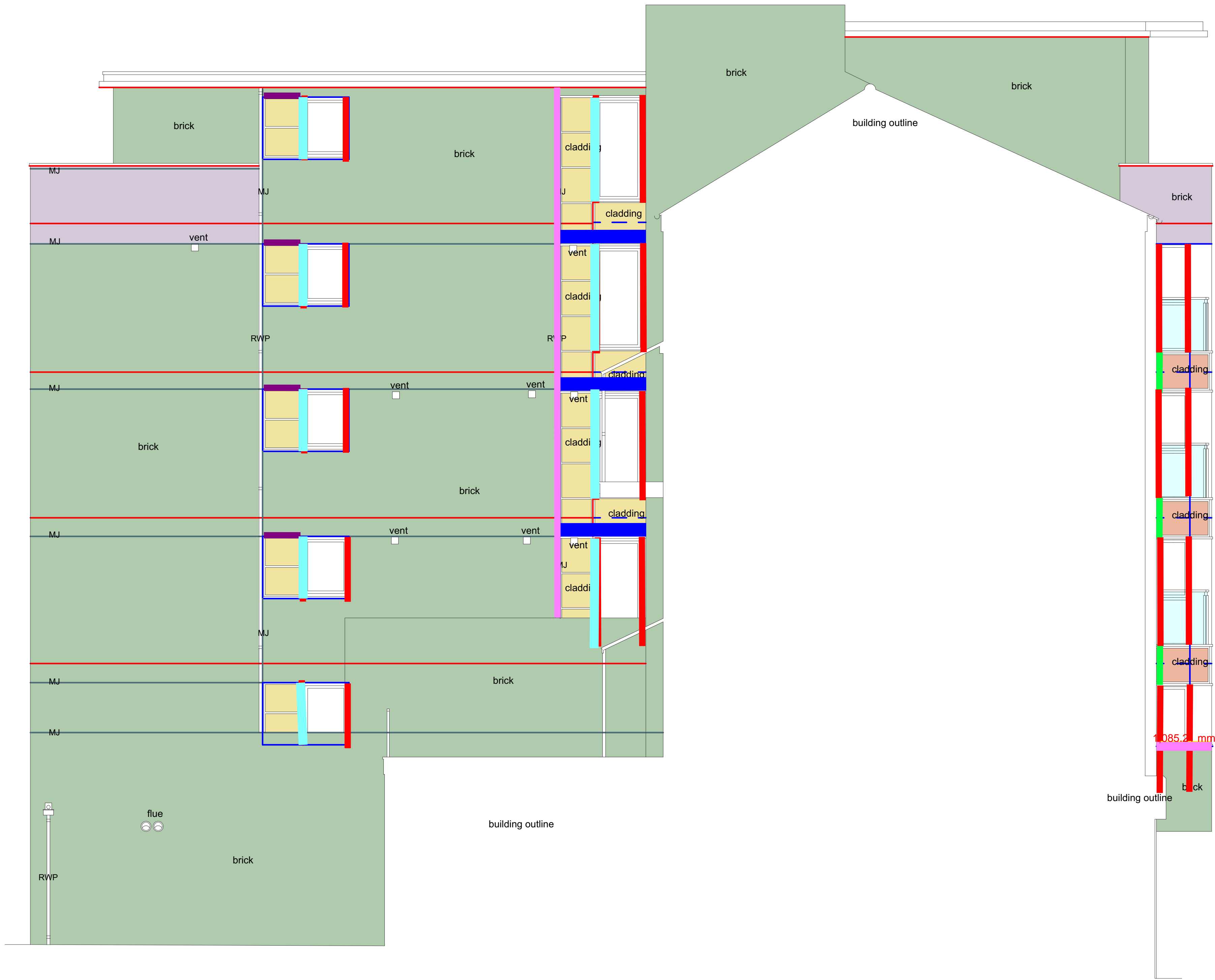
KEY - Markup for Flamingo

- Close off balconies
- Firestopping steel to ceiling
- Firestopping lintels
- Firestopping between cladding & brickwork
- Firestopping 600mm void



KEY

- Close off balconies
- Firestopping steel to ceiling
- Firestopping lintels
- Firestopping between cladding & brickwork
- Firestopping 600mm void
- Close off battens at window edges
- Timber board removed and replaced with A2 alternative



Datum 98.00m

WEST ELEVATION

PLEASE NOTE:
THESE ARE **NOT** AS BUILT DRAWINGS. ALL
DISCREPANCIES ARE DUE TO "AS BUILT" INFORMATION
AVAILABLE - NEEDS FURTHER CONFIRMATION

KEY

- Cavity Barrier 30min Integrity/15min Insulation
- Cavity Barrier 30min Integrity/15min Insulation OSCB (open state cavity barrier)
- Cavity Barrier around Windows and Doors 30min Integrity/15min Insulation
- Cavity Barrier around Windows and Openings 30min Integrity/15min Insulation OSCB (open state cavity barrier)
- Movement Joints
- WT 01 - Aluminium Rainscreen Cladding Panels
- WT 02 - Brickwork Wall with non-combustible partial-fill insulation
- WT 03 - Rendered Wall
- WT 04 - Balconies
- WT 05 - Metal Panels - Projecting Balconies (backing substrate unknown)
- WT 06 - Brickwork Wall with fire rated full-fill insulation to Parapet Wall

Note 1 - Brickwork
To ensure coordination with existing windows, balconies, and edges, brickwork setting out in both the vertical and horizontal directions should match existing. We would, therefore, request that the brickwork subcontractor record the setting out before demolition occurs.

Note 2 - Services Penetrations
Services penetrations are to be protected and maintained operational and free from blockage during construction

Note 3 - Rainwater Hoppers and Downpipes
Rainwater hoppers and downpipes are to be retained and replaced. It is acknowledged that they will need to be altered at times to facilitate the remedial works, but they should be maintained operational at all times.

06	FOR TENDER	RS	ML	06/01/2025
05	FOR TENDER	RS	ML	23/12/2024
04	FOR TENDER	RS	ML	20/11/2024
03	REVISED DRAFT	MD	NC	19/02/2024
02	REVISED DRAFT	MD	NC	06/11/2023
01	FOR REVIEW	MD	NC	12/10/2023

Revision	Description	Drawn	Checked	Date
----------	-------------	-------	---------	------

CREATE
DESIGN + ARCHITECTURE

Wigglesworth House 69 Southwark Bridge Road London SE1 9HH
+44 207 021 0267 info@createdesign.org www.createdesign.org

CROWNDALE HOUSE

NW1 1TT

Client

Fairway Property Investments Ltd.

RE-CLADDING OF RESIDENTIAL BUILDING

ELEVATION MARKUPS

WEST ELEVATION

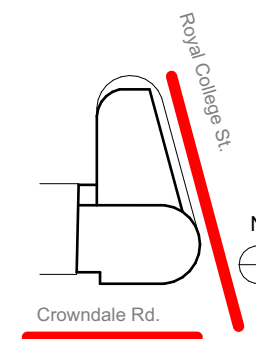
CDA Ref	Scale(s)	Original Paper Size
704	1:1, 1:50	A1

Drawing Number							
Project	Originator	Volume	Level	Type	Role	Class	Number
704	CDA	XX	05	DR	A	21	0202






Revision	Revision Description
06	FOR TENDER

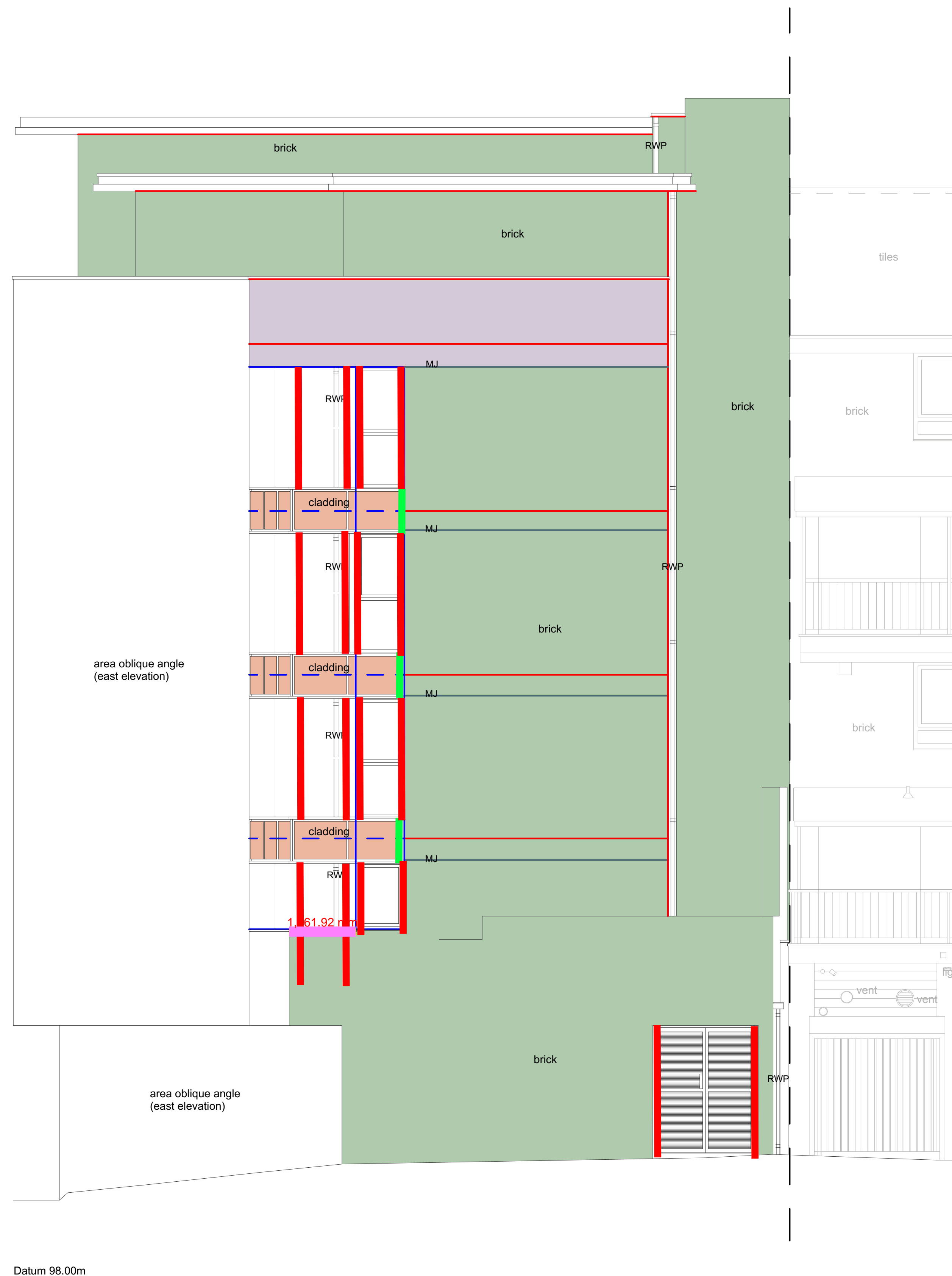
This document and its design content is copyright ©. It shall be read in conjunction with all other associated project information including models, specifications, schedules and related consultants documents. Do not scale from documents. All dimensions to be checked on site. Immediately report any discrepancies, errors or omissions on this document to the Originator. If in doubt ASK.

PLEASE NOTE:
THESE ARE **NOT** AS BUILT DRAWINGS. ALL
DISCREPANCIES ARE DUE TO "AS BUILT" INFORMATION
AVAILABLE - NEEDS FURTHER CONFIRMATION



KEY












-  Close off balconies
-  Firestopping steel to ceiling
-  Firestopping lintels
-  Firestopping between cladding & brickwork
-  Firestopping 600mm void
-  Close off battens at window edges
-  Timber board removed and replaced with A2 alternative



Datum 98.00m

NORTH ELEVATION

KEY

-  Cavity Barrier 30min Integrity/15min Insulation
-  Cavity Barrier 30min Integrity/15min Insulation OSCB (open state cavity barrier)
-  Cavity Barrier around Windows and Doors 30min Integrity/15min Insulation
-  Cavity Barrier around Windows and Openings 30min Integrity/15min Insulation OSCB (open state cavity barrier)
-  Movement Joints
-  WT 01 - Aluminium Rainscreen Cladding Panels
-  WT 02 - Brickwork Wall with non-combustible partial-fill insulation
-  WT 03 - Rendered Wall
-  WT 04 - Balconies
-  WT 05 - Metal Panels - Projecting Balconies (backing substrate unknown)
-  WT 06 - Brickwork Wall with fire rated full-fill insulation to Parapet Wall

Note 1 - Brickwork
To ensure coordination with existing windows, balconies, and edges, brickwork setting out in both the vertical and horizontal directions should match existing. We would, therefore, request that the brickwork subcontractor record the setting out before demolition occurs.

Note 2- Services Penetrations
Services penetrations are to be protected and maintained operational and free from blockage during construction

Note 3- Rainwater Hoppers and Downpipes
Rainwater hoppers and downpipes are to be retained and replaced. It is acknowledged that they will need to be altered at times to facilitate the remedial works, but they should be maintained operational at all times.

03	FOR TENDER	RS	ML	06/01/2025
02	FOR TENDER	RS	ML	23/12/2024
01	FOR TENDER	RS	ML	20/11/2024

CREATE
DESIGN + ARCHITECTURE

Wigglesworth House 69 Southwark Bridge Road London SE1 9HH
+44 207 021 0267 info@createdesign.org www.createdesign.org

CROWNDALE HOUSE

NW1 1TT

Client

Fairway Property Investments Ltd.

RE-CLADDING OF RESIDENTIAL BUILDING

ELEVATION MARKUPS

NORTH ELEVATION

CDA Ref	Scale(s)	Original Paper Size
704	1:1, 1:50	A1

Drawing Number

Project	Originator	Volume	Level	Type	Role	Class	Number
704	CDA	XX	05	DR	A	21	0203

Revision	Revision Description
03	FOR TENDER

This document and its design content is copyright ©. It shall be read in conjunction with all other associated project information including models, specifications, schedules and related consultants documents. Do not scale from documents. All dimensions to be checked on site. Immediately report any discrepancies, errors or omissions on this document to the Originator. If in doubt ASK.